



BUMN

KEMENTERIAN
BADAN USAHA
MILIK NEGARA
REPUBLIK
INDONESIA

BADAN KOORDINASI PENANAMAN MODAL



**Kementerian
Perindustrian**
REPUBLIK INDONESIA



CONSTRUCTION & INVESTMENT

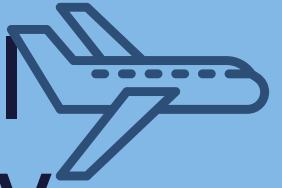


BATANG INTEGRATED INDUSTRIAL ESTATE

The **Smart and Sustainable** Industrial Estate



International Connectivity



2 hours from Singapore

5,5 hours from Taiwan

7 hours from Shanghai

7 hours from South Korea

10 hours from Japan

23 hours from America

BATANG INTEGRATED INDUSTRIAL ESTATE

Strategically Located in the North Java Economic Corridor



BATANG INTEGRATED INDUSTRIAL ESTATE

50 Km
From Internasional
Ahmad Yani
Airport

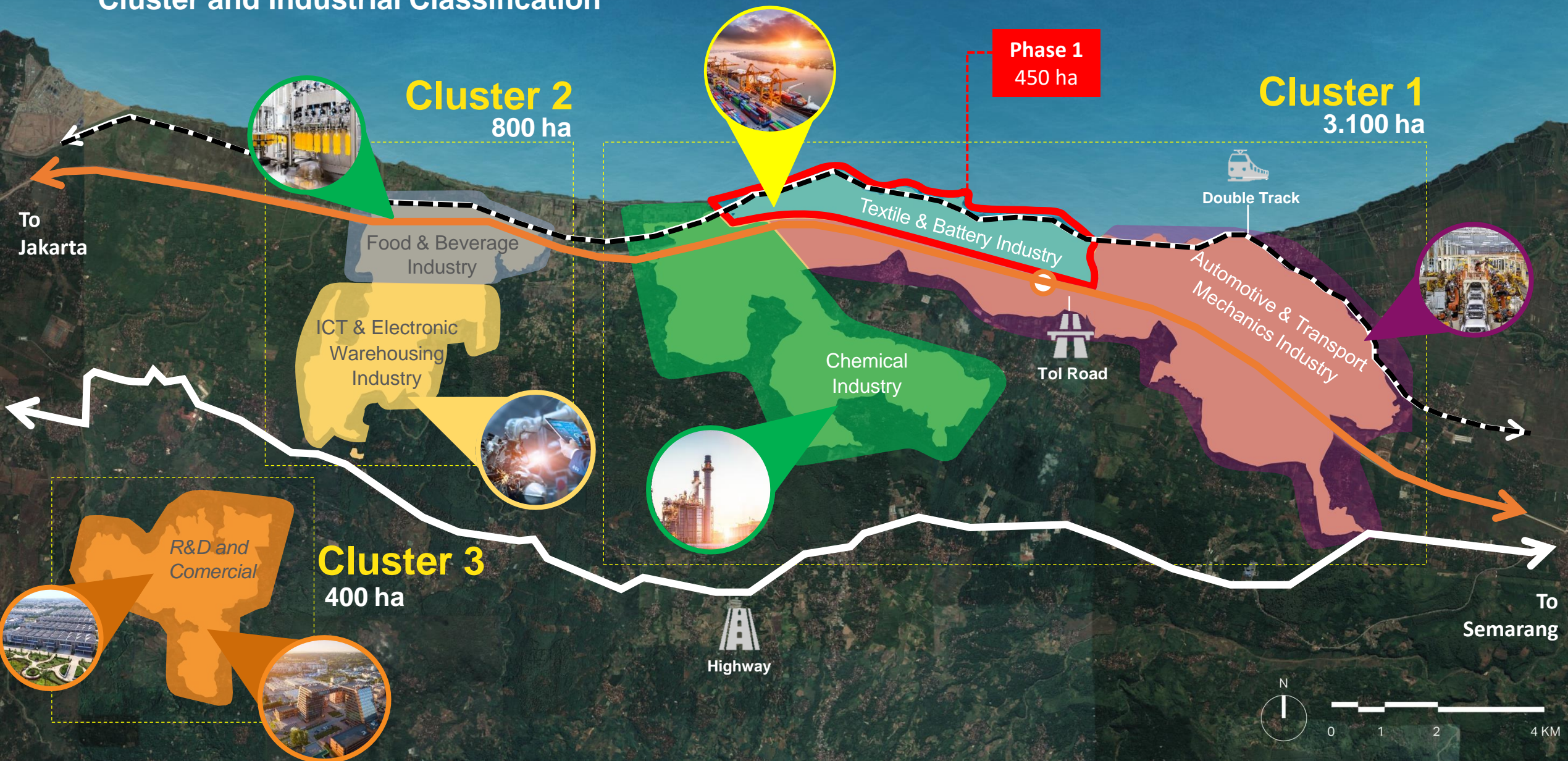
65 Km
From
Tanjung Emas
Port

1 Hours
From Semarang
City

4 Hours
From Jakarta
City

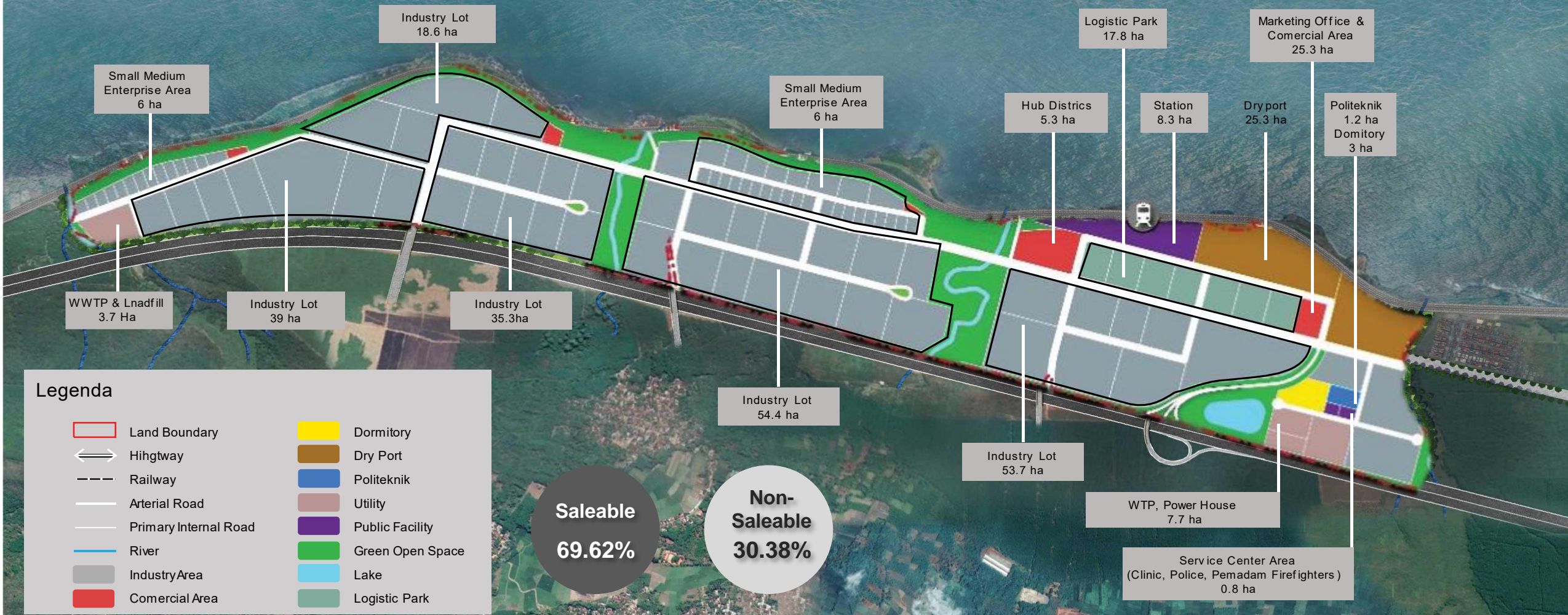
BATANG INTEGRATED INDUSTRIAL ESTATE

Cluster and Industrial Classification



MASTER PLAN PHASE 1 | 450 Ha

Land Use Plan



Timeline Infrastructure Phase 1 (450 Ha)

Supporting Facilities and Regional Connectivity

WWTP, Sanitary Landfill
Construction in 2021



Station and Dry Port
Construction in October 2020



Port
Construction in January 2021

Raw Water Supply
Construction in January 2021



Raw Water Treatment Plant
Construction in January 2021



Marketing Gallery
Construction is complete
October 2020

Main road 5.2 Km
Construction is complete
December 2020



Toll Interchange
KM 371+800
Construction is complete
March 2021

Electric network
Construction in
October 2020



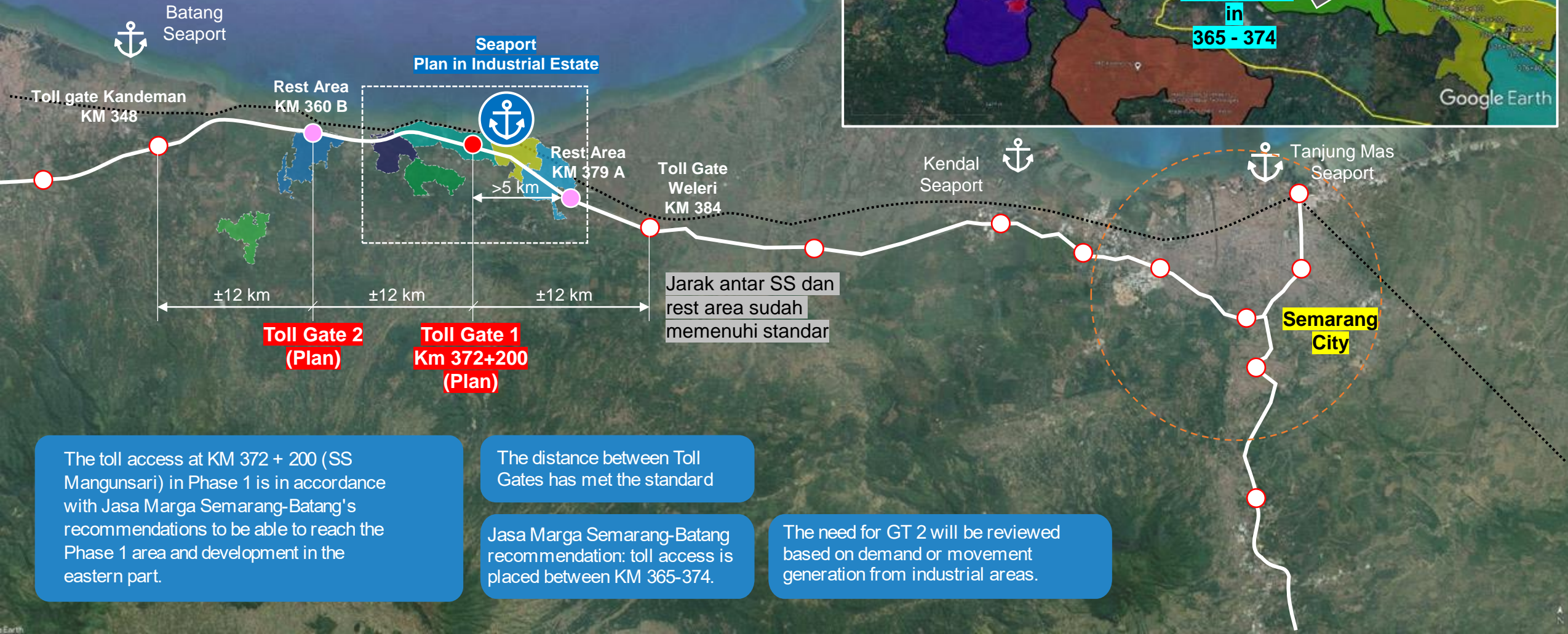
Secondary Path 11.4 Km
Construction is complete
December 2020



Temporary Access
Clearing is Complete
Agustus 2020

Toll Access

Area Facility



The toll access at KM 372 + 200 (SS Mangunsari) in Phase 1 is in accordance with Jasa Marga Semarang-Batang's recommendations to be able to reach the Phase 1 area and development in the eastern part.

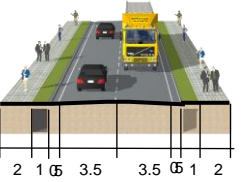
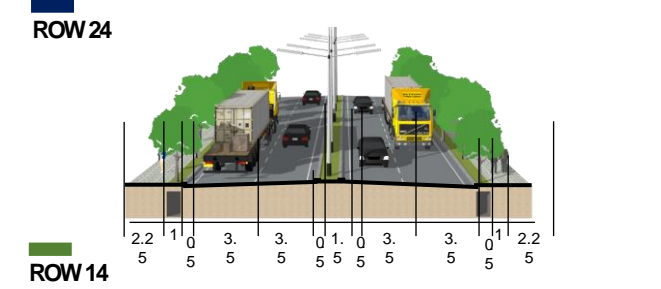
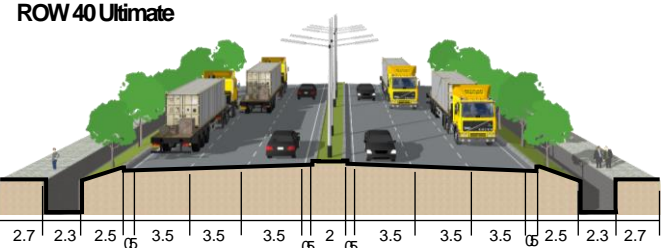
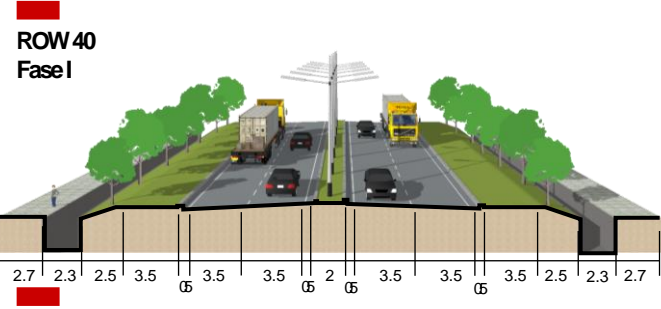
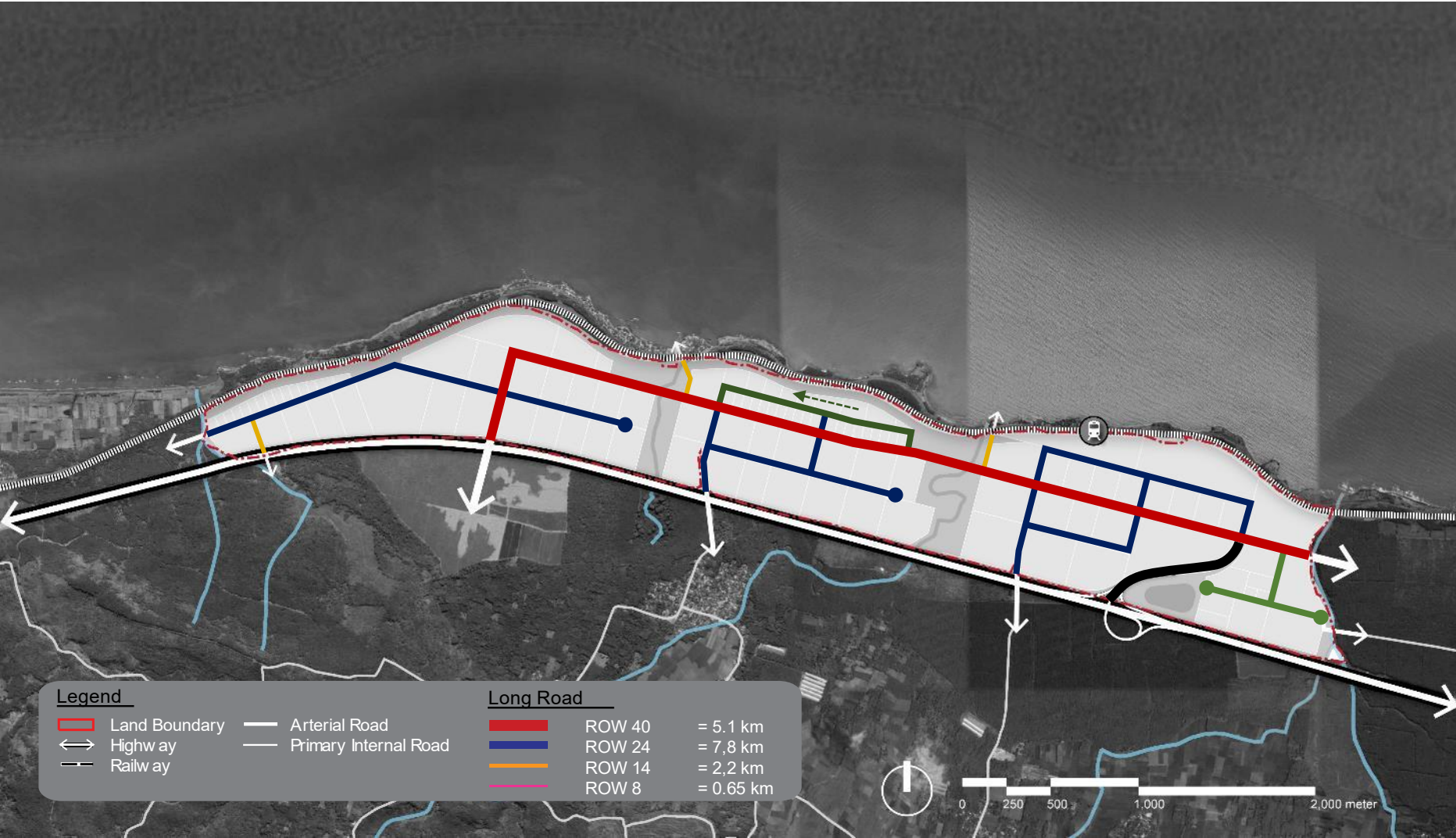
The distance between Toll Gates has met the standard

Jasa Marga Semarang-Batang recommendation: toll access is placed between KM 365-374.

The need for GT 2 will be reviewed based on demand or movement generation from industrial areas.

Road Network Plan

Internal Area (Phase 1 450Ha)





THANK YOU

ありがとうございました